

Note: All basic fold styles have been included in this file. Please choose the two pages which best match your layout. You may then delete any unused pages if you prefer.

**16" x 9" Tri-Fold
(letterfold) Brochure***

(15.875" x 9" actual trim size)
(16.125" x 9.25" including .125" Bleed)

Front (outside)

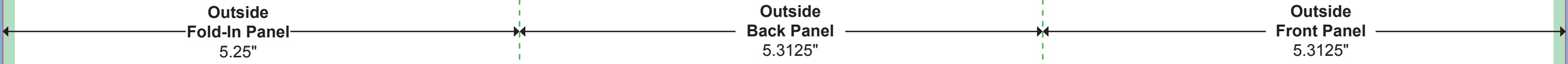
* Note: your document size should be set to 15.875" x 9" and the bleeds set to .125". Any artwork that touches the page edge must be extended outwards from that page edge by .125".

**Delete This Art
Before Printing!**

Text Safety Guide →
No text beyond this line.

Trim Edge →
This is the actual cut line of the final trim size.

.125" Bleed →
To ensure that ink coverage goes to the final trim size, extend any art, pictures, or other graphics .125" beyond the trim edge to this point.



Note: All basic fold styles have been included in this file. Please choose the two pages which best match your layout. You may then delete any unused pages if you prefer.

**16" x 9" Tri-Fold
(letterfold) Brochure***

(15.875" x 9" actual trim size)
(16.125" x 9.25" including .125" Bleed)

Back (inside)

* Note: your document size should be set to 15.875" x 9" and the bleeds set to .125". Any artwork that touches the page edge must be extended outwards from that page edge by .125".

**Delete This Art
Before Printing!**

Text Safety Guide →
No text beyond this line.

Trim Edge →
This is the actual cut line of the final trim size.

.125" Bleed →
To ensure that ink coverage goes to the final trim size, extend any art, pictures, or other graphics .125" beyond the trim edge to this point.

